

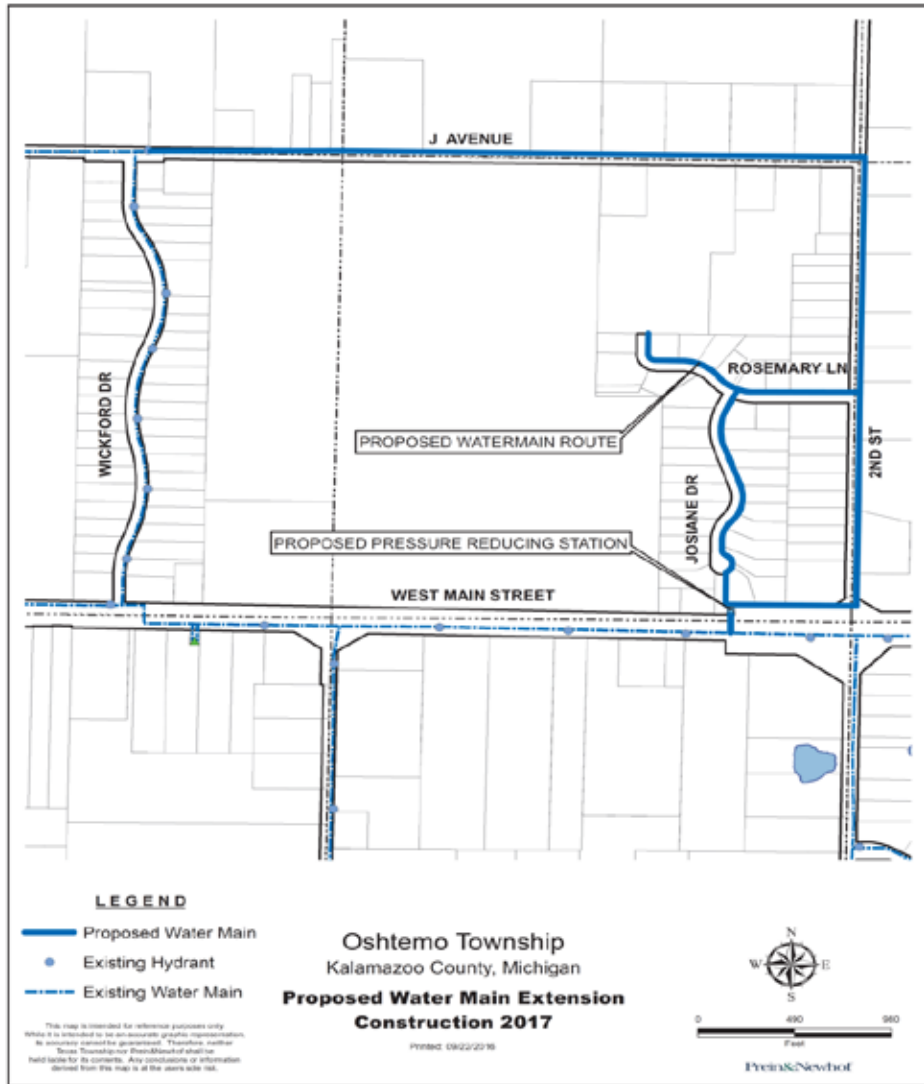
Oshtemo Township
MUNICIPAL WATER EXTENSION

PUBLIC MEETING
November 30, 2016

PURPOSE

- n This meeting is for residents that received letters dated November 14 from Oshtemo Township regarding a planned municipal water expansion north of West Main Street.
- n Discuss reason, timing, and process for expansion.
- n Share information and address questions.

Water Extension Area



BACKGROUND AND OVERVIEW

- n The KLA Group is addressing historic groundwater impacts associated with the KL Avenue Landfill on West KL Avenue.
- n The Landfill operated from about 1950 to 1979 and was designated as a Superfund Site in 1982.
- n The KLA Group is comprised of Oshtemo Township, Kalamazoo County, the City of Kalamazoo, and The Upjohn Company.
- n Work is being conducted under the oversight of the United States EPA with support from the Michigan DEQ.
- n Work has included installing an impermeable cap on the landfill, an active gas collection system, monitoring hundreds of wells, and providing municipal water in affected areas.
- n More information is available on the KLA Group website:
<http://westklavelandfill.com/>

Impermeable Cap Being Installed on Landfill



05/25/2006

Active Gas Collection System



2009 Aerial Photo



December 1, 2016

BACKGROUND AND OVERVIEW

- n The Landfill plume is relatively stable and impacts are naturally “attenuating” or decreasing.
- n However, Michigan DEQ recently issued a new state-wide drinking water criterion for 1,4-diethylene dioxide (aka 1,4-DD or 1,4-dioxane), lowering the acceptable limit from 85 parts per billion (ppb) to 7.2 ppb.
- n 1,4-DD is the primary compound of concern currently associated with the Landfill. 1,4-DD was most commonly used in the past as a stabilizer for solvents. It is also found in cosmetics, soaps, and pesticides. It is possible to find low-levels as a result of various sources (e.g. septic, old dumps, agricultural).

Residential Monitoring

- n Initial Monitoring of Josiane Drive Area started in 1999
- n Most recent (Fall 2016) Monitoring by KLA Group included over 24 residences in the MWS Area (**Thank you!** - for your cooperation for access). Expanded monitoring as a result of criteria change.
- n Next sampling event in spring (April/May) 2017 to include those sampled in fall 2016 and others in MWS expansion area that grant access.
- n If you have a concern or desire for testing sooner – please contact:
Kalamazoo County Health and Community Services
Jeffrey Reicherts 269-373-5336 jdreic@kalcounty.com - or

KLA Group Contractor: Golder Associates Inc.

Timothy Richards 770-496-1893 trichards@golder.com

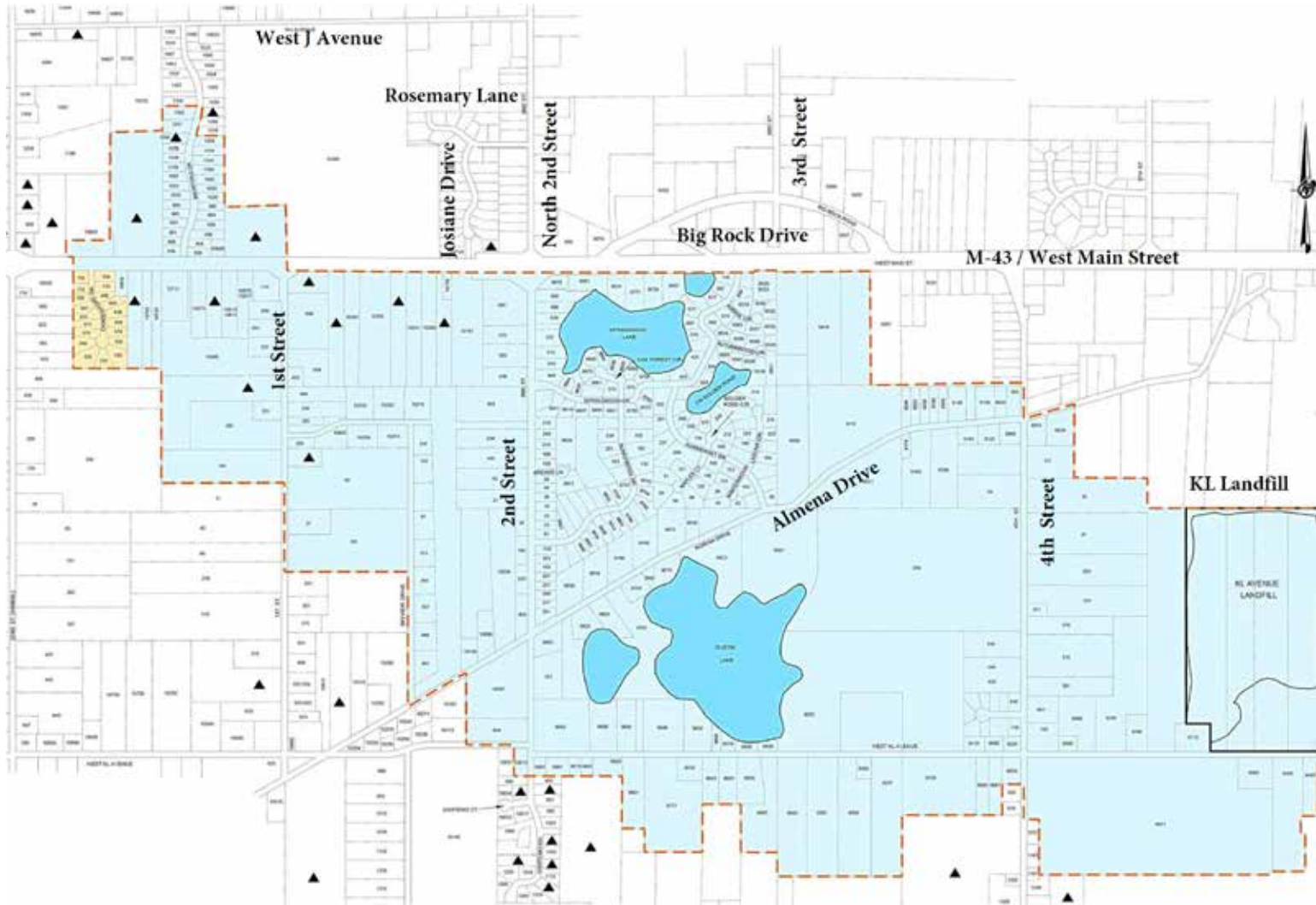
BACKGROUND AND OVERVIEW

- n In 1992, USEPA and the KLA Group entered into a consent decree giving the Group primary responsibility for implementing remedial activities at the site. These activities are decided by EPA with public input and are set forth in the site's "Record of Decision" or "ROD."
- n The consent decree and ROD require that municipal water be supplied to residents within a designated area called the "Groundwater Restricted Zone" or "GRZ."
- n The GRZ prohibits the use of groundwater for drinking if that water does not meet Michigan drinking water criteria or is within a 1,000 foot downgradient "buffer zone."

BACKGROUND AND OVERVIEW

- n The initial GRZ for the Landfill was established in accordance with the Kalamazoo County Sanitary Code in March of this year.
- n GRZ is based on extensive data/testing, flow direction, buffer zone requirement, parcel boundaries and the relevant drinking water criteria.

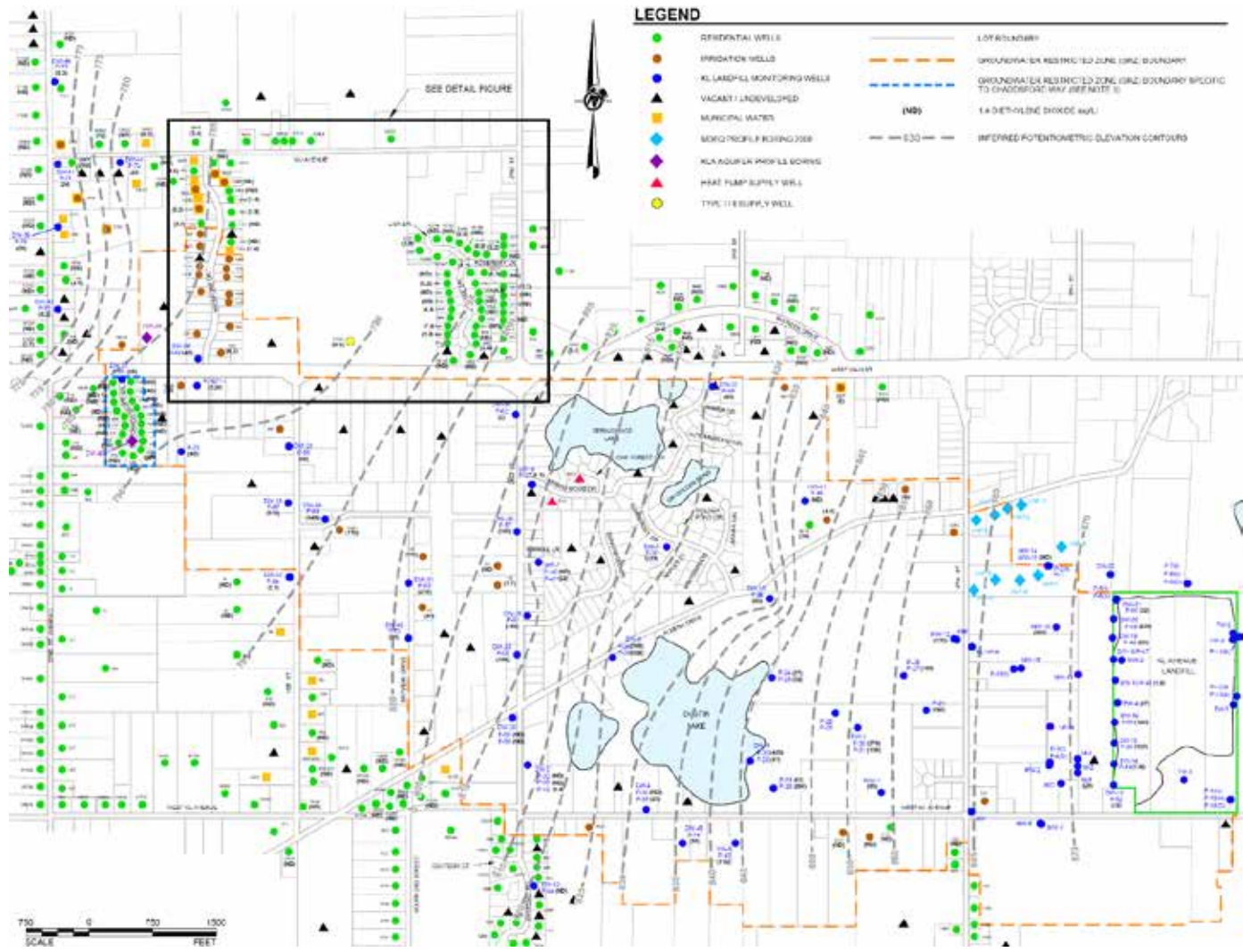
KL LANDFILL SITE AND CURRENT GRZ



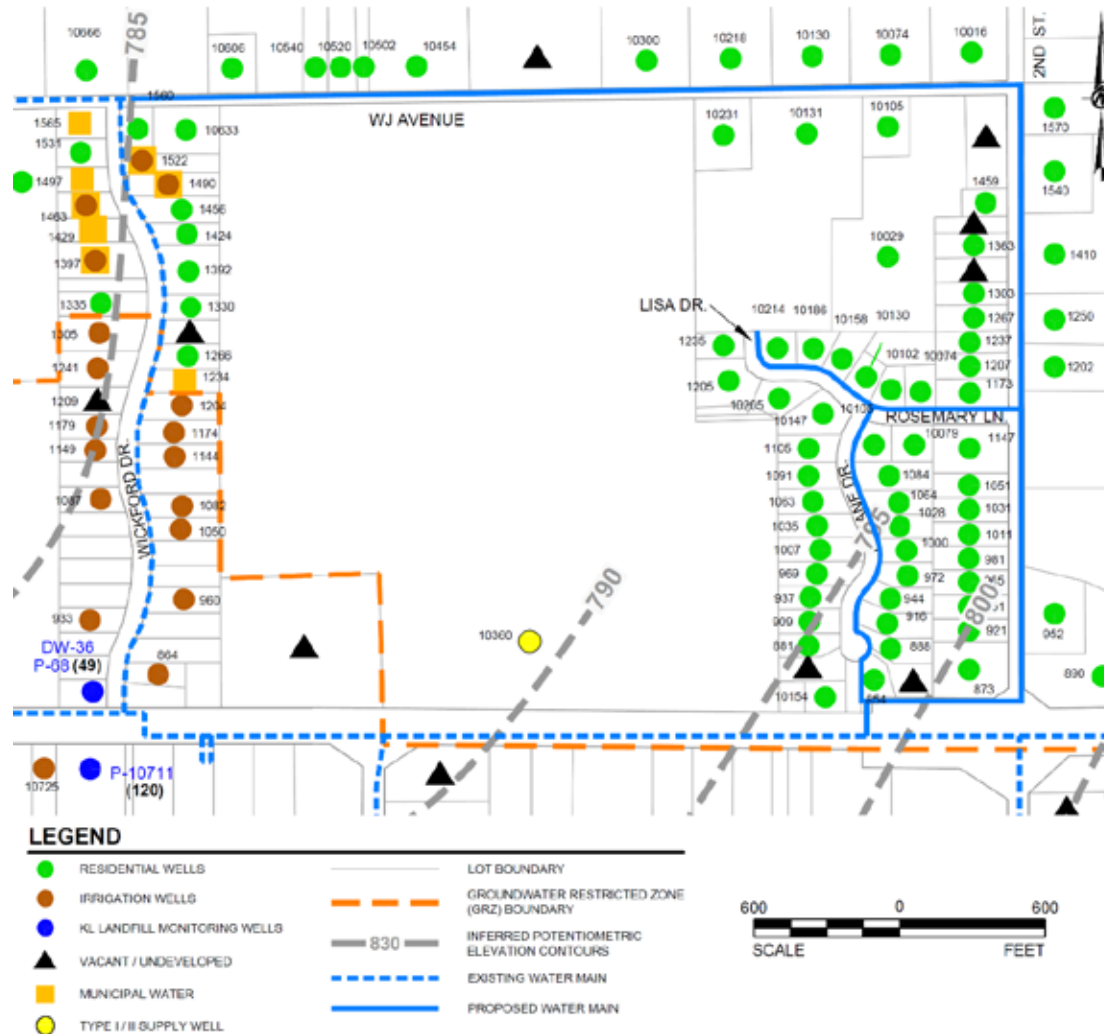
Municipal Water Expansion

- n Based on groundwater monitoring data and new criteria, the GRZ will likely need to be amended (a one to two year process) to include portions of your area.
- n The planned municipal water expansion is the first step in that process.
- n Expansion is based on contemplated GRZ as well as engineering considerations (avoid dead end lines, etc.). Expansion Area \neq GRZ.
- n Properties within the municipal water expansion that have had 1,4-DD detected in their wells are encouraged to connect to the new municipal water supply in advance of the GRZ amendment.
 - n Ensures a water supply that meets State criteria.
 - n Work can be done in conjunction with water mains.
- n The connection is at no cost to the property owner.
- n The expansion will include fire hydrants to bring fire protection to your area.

AREA NORTHWEST OF KL AVENUE LANDFILL



Detail Map of MWS Expansion



ROLES AND RESPONSIBILITIES

- n USEPA – lead agency
- n MDEQ – support agency
- n KLA Group – project coordination
- n Supporting roles for this project:
 - n Oshtemo Township and Township Engineer – resident communications, municipal water coordination and planning
 - n Kalamazoo County Health & Community Services – public outreach, environmental and health
 - n City of Kalamazoo Dept. of Public Services Water Resource Division – design/construction of municipal water infrastructure
 - n Golder Associates – KLA Group consultants / contractors
 - n Work contractor based on competitive bid (local plumbing subcontractor)

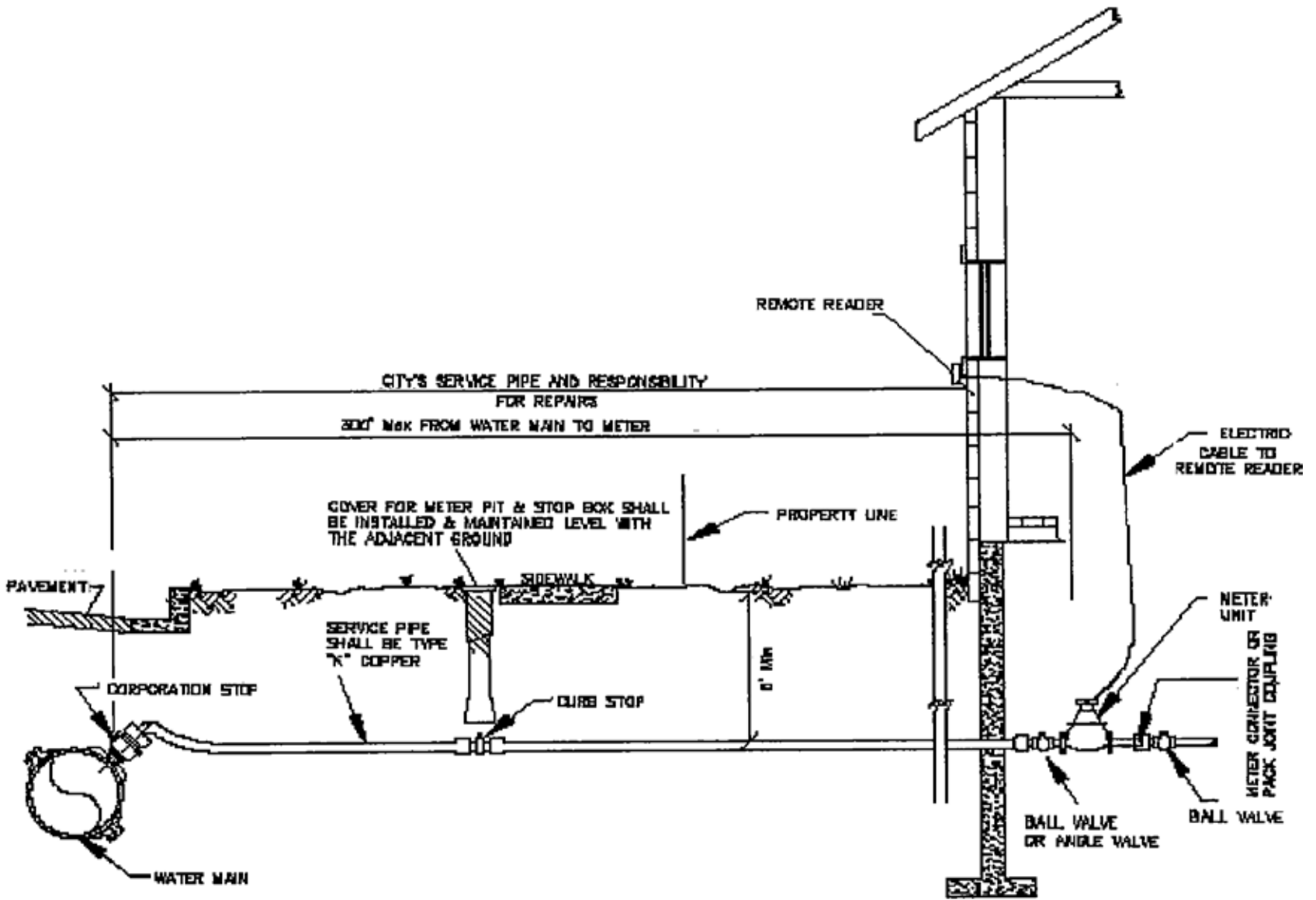
SCHEDULE AND PROCESS

n SCHEDULE:

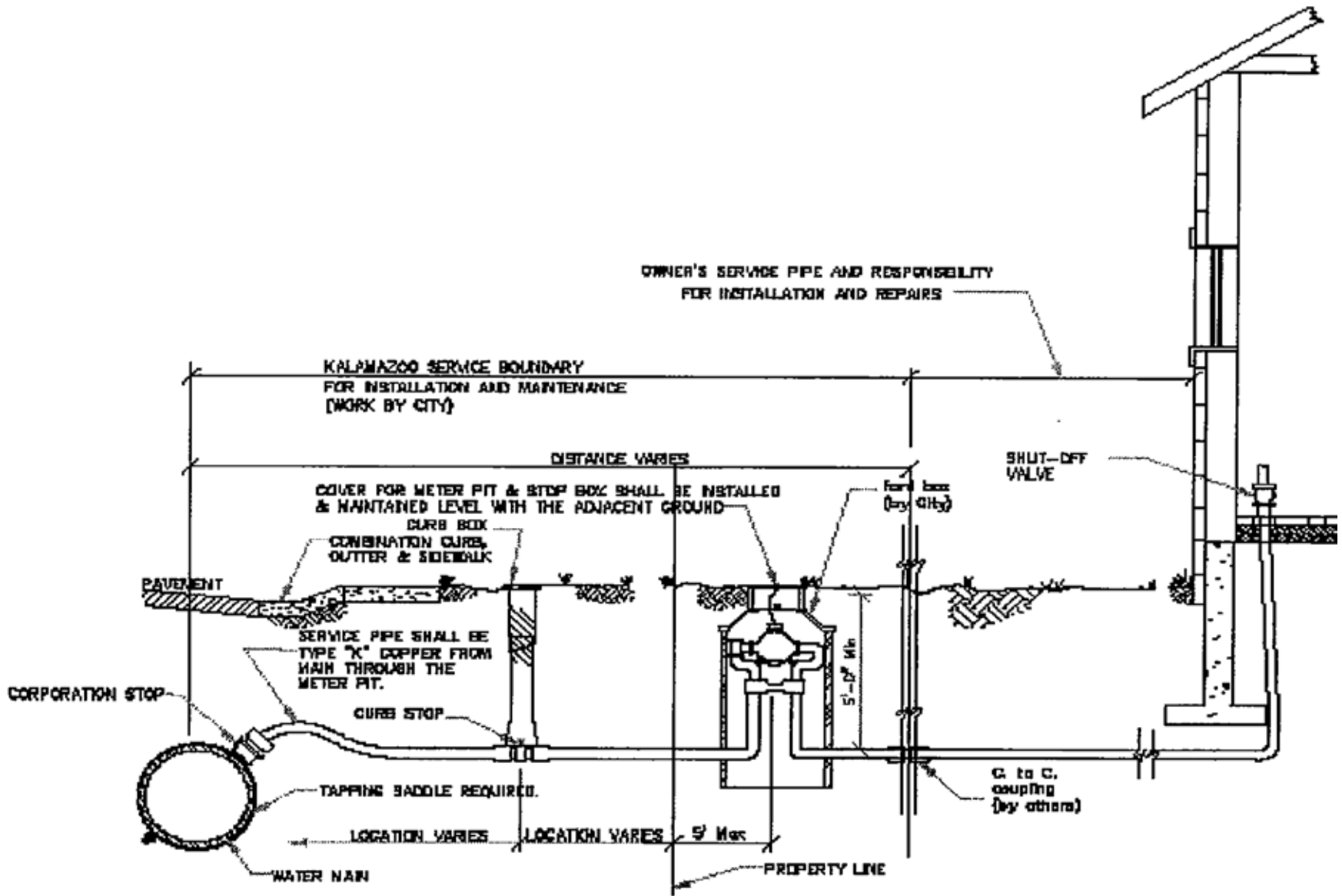
- n Design: September-November 2016
- n Bidding December 2016 – January 2017
- n Construction of water main and pressure reducing stations to start in spring 2017
- n System to be completed & operational in third quarter 2017
- n Residential connections starting in third quarter
- n Connections are typically a one to two day process
- n Schedule updates – will be posted on Twp. website and KLA Group website

n PROCESS FOR CONNECTION:

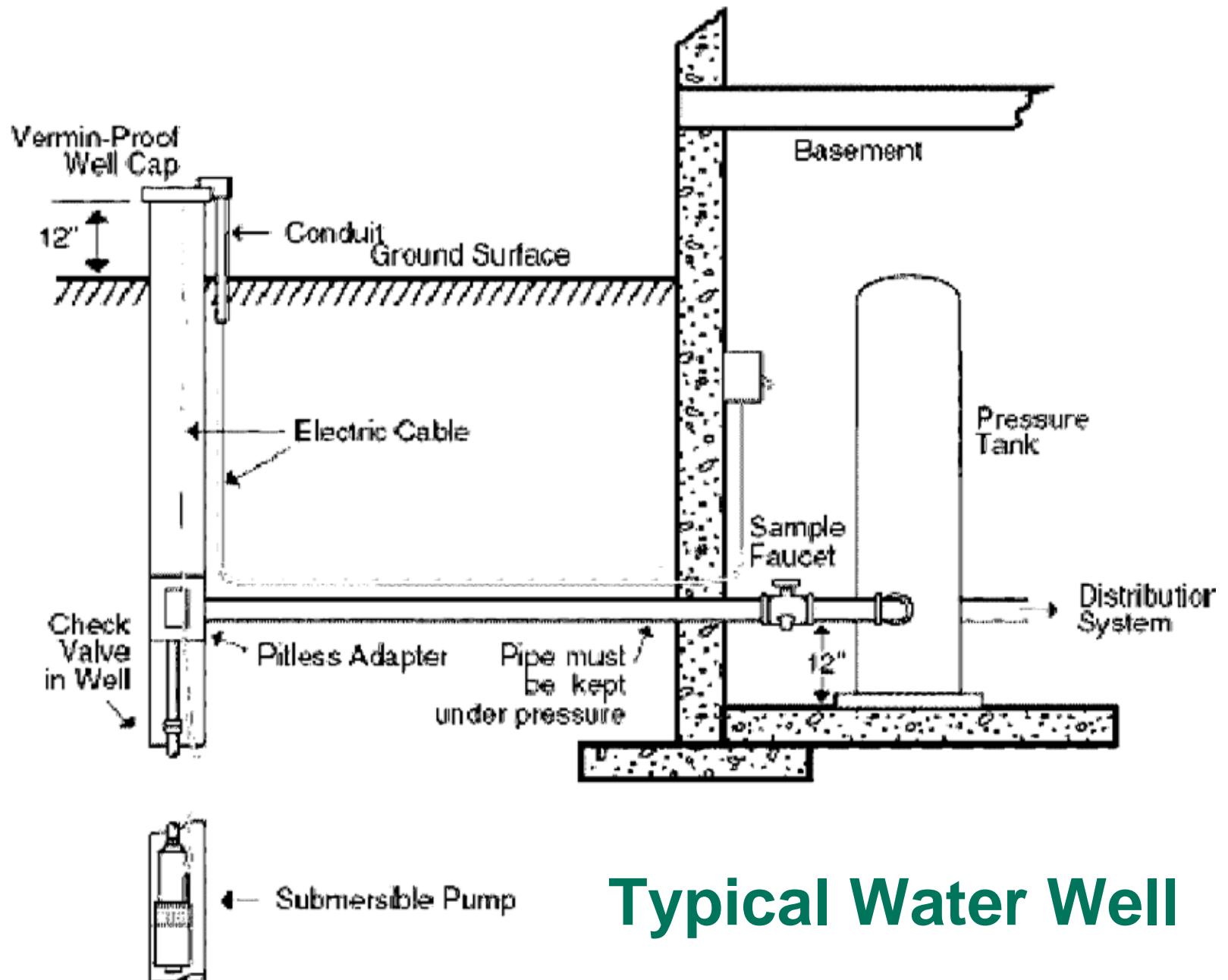
- n Resident provided a Connection Agreement, which is voluntary at this time
- n Connection to municipal water system is at no cost to owner (property owner is responsible for future water bills)
- n KLA Group contractor / plumber works out specifics with property owner
- n Includes disconnection and proper sealing/abandonment of well
- n Owner to provide information on known subsurface features (e.g. septic, sprinkler lines, etc.). Contractor clears utilities (Miss Dig).
- n KLA Group to restore disturbed areas to pre-existing conditions
- n Final connection and restoration inspection



Public Water Connection



Water Connection w/Ford Meter Box



Typical Water Well

QUESTIONS?

15169640